



Field work Saas-Fee

27-08-2025

Saas Fee

Rim Nabha

Nour Nasser

Meriam Dhieb

Kevin Huynen Ciolak

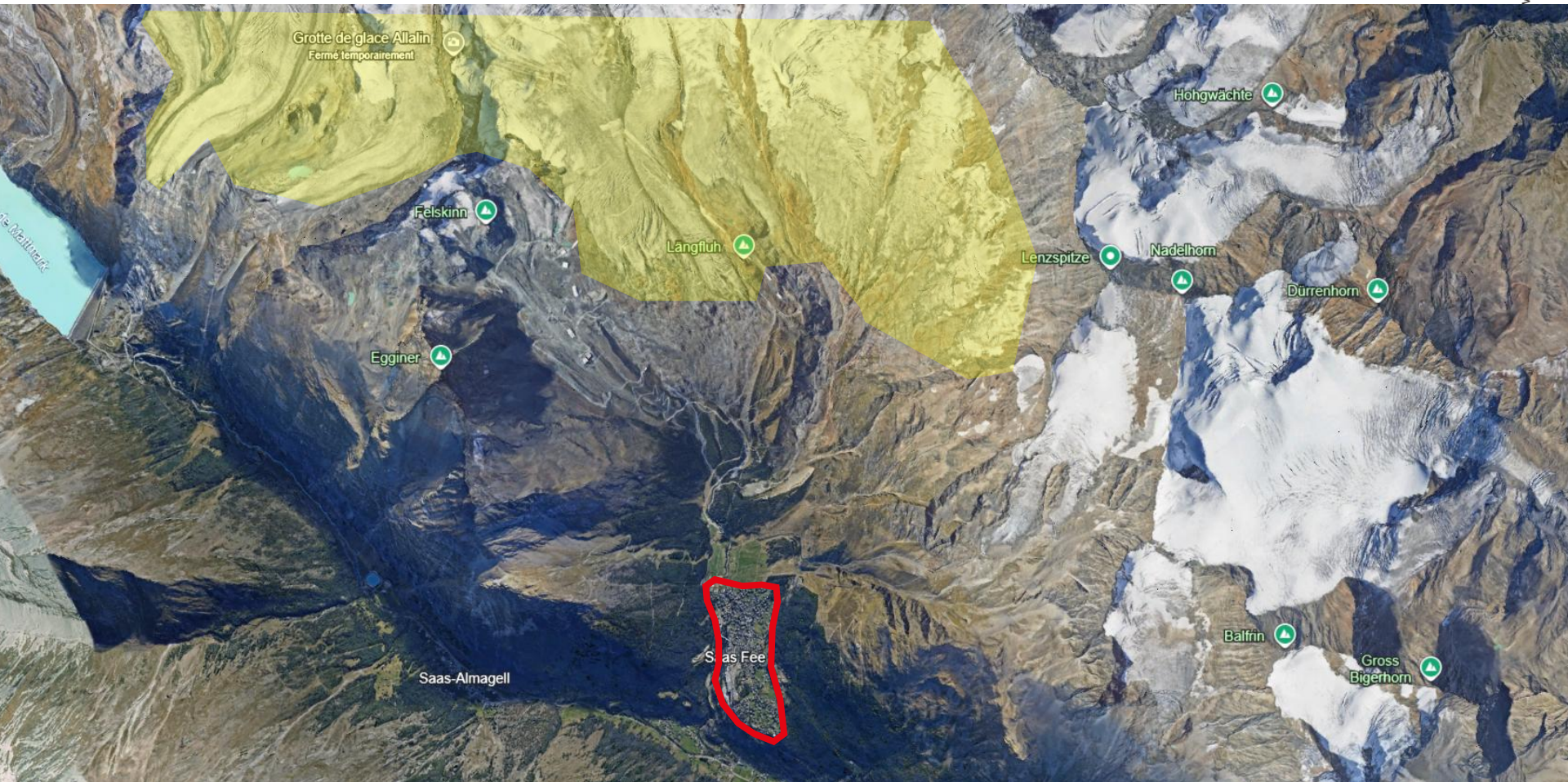
Alejandro Velázquez

Naoufal Mekouar

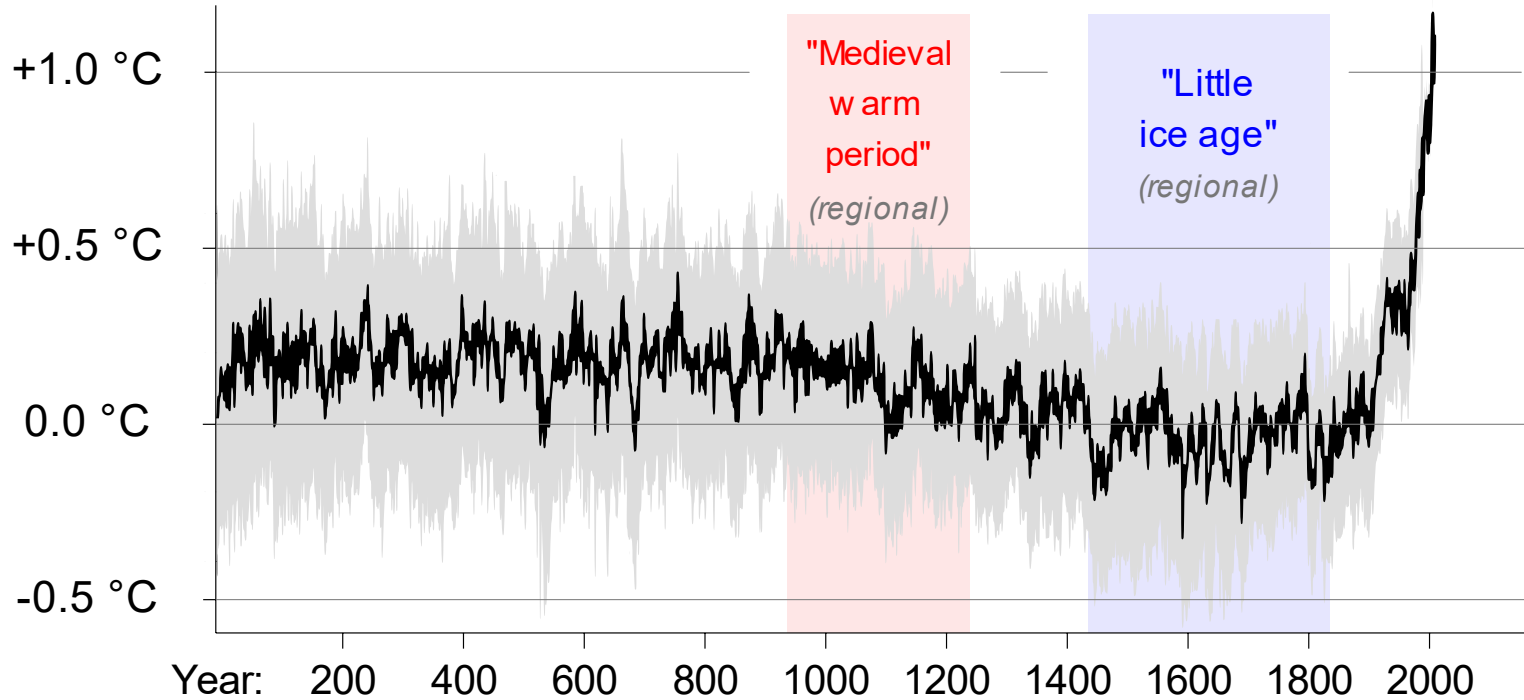


Saas-Fee location





Global Average Temperature Change





Saas-Fée

Field observation #1



Field observation #1



Field observation #1 : Moraines

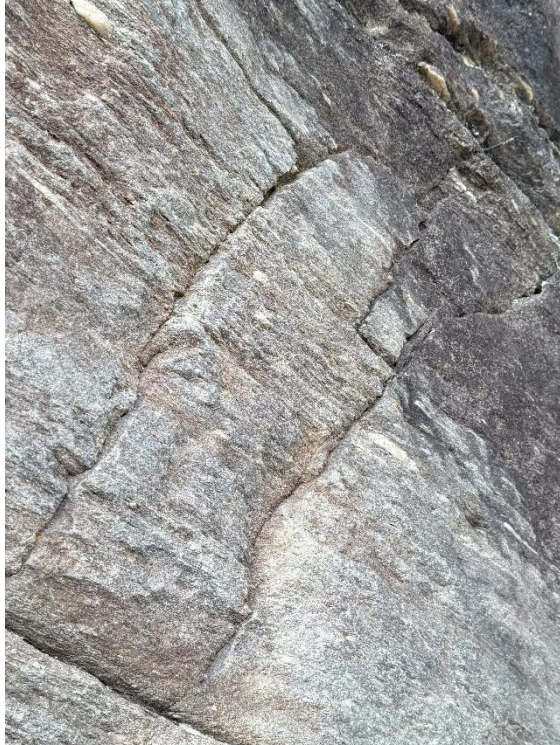
Moraines: debris resulting from wear

- Natural large-scale tribology system:
 - Former glacier (moving counterpart)
 - Bedrock (static surface)



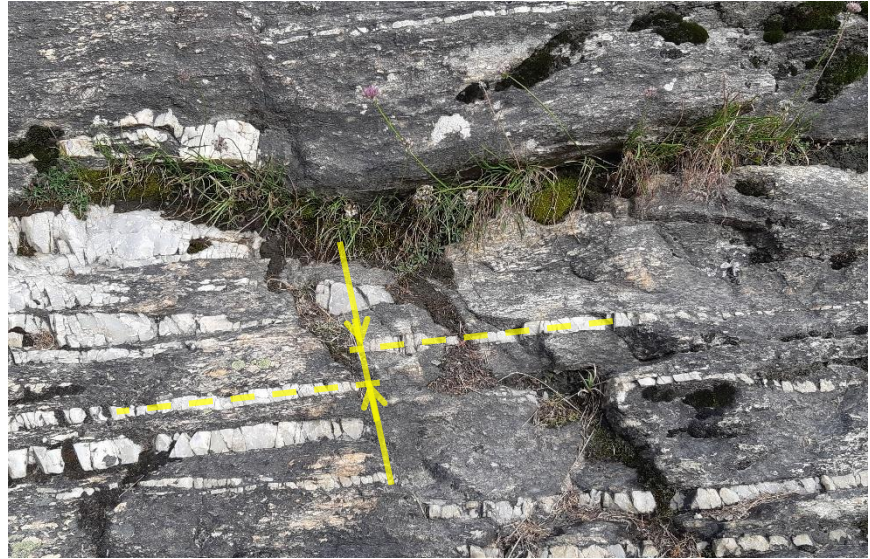
Field observation #2 : Wing cracks

A **wing crack** is a tensile fracture that propagates from the tip of a larger shear fracture or pre-existing flaw, often forming at an angle oblique to the shear plane



Field observation #3 - Offsets

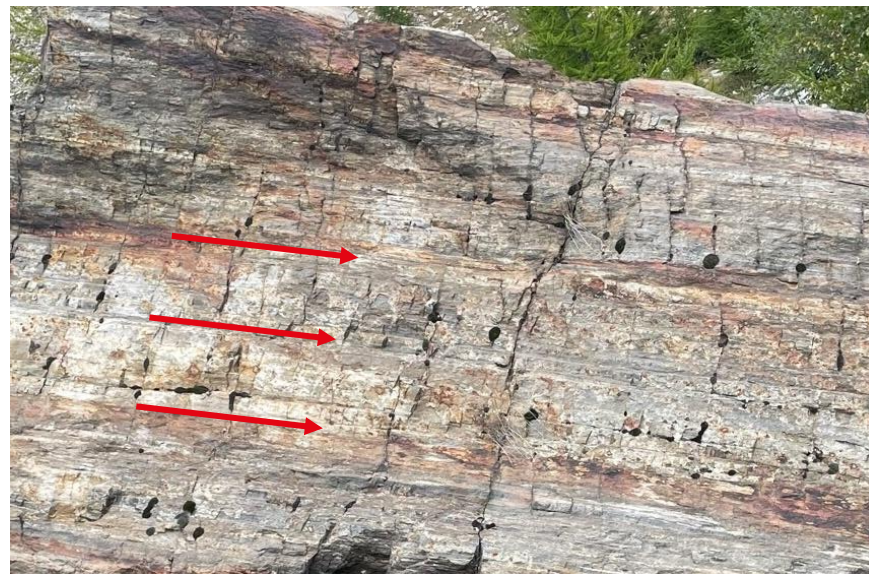
Rock offset refers to the displacement or movement of rock masses across a fault, resulting in the separation of formerly contiguous rock layers or features.



Field observation #4

A **slickenside** is a striated rock surface on a fault caused by friction from the movement of rock masses past each other, with the grooves (slickenlines) indicating the direction of slip.

- Sliding evidence : slickensides
- Striations : sliding vector





Thank you!

SaaS·Fee